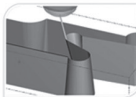
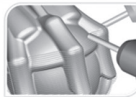
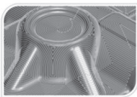


# ***Mastercam X<sup>5</sup>***

## ***Installation Guide***



World Class Machining



# Mastercam X5 Installation Guide

September 2010

**Be sure you have the latest information!**

Information might have been changed or added since this document was published. The latest version of this document is installed with Mastercam or can be obtained from your local Reseller. The ReadMe file (`ReadMe.htm`) includes the latest information about new features and enhancements.



## **Mastercam® X5 INSTALLATION GUIDE**

Date: September 2010

Copyright © 2010 CNC Software, Inc.— All rights reserved.

First Printing: September 2010

Software: Mastercam X5

Part Number: X5-InstallGuide

### **TERMS OF USE**

Use of this document is subject to the Mastercam End User License Agreement. A copy of the Mastercam End User License Agreement is included with the Mastercam product package of which this document is part. The Mastercam End User License Agreement can also be found at:

[www.mastercam.com/legal/licenseagreement/](http://www.mastercam.com/legal/licenseagreement/)

# Mastercam X5 Installation

This installation guide provides the information you need to install and start the latest Mastercam release. The topics covered in this guide are:

- ❖ **System Requirements**..... page 2
- ❖ **Installation Requirements** ..... page 3
- ❖ **Previous Mastercam Versions**..... page 4
- ❖ **Installing Mastercam**..... page 4
- ❖ **Starting Mastercam**..... page 6
- ❖ **Mastercam Support and Services**..... page 6

*Note: The Mastercam X5 Administrator Guide, accessible from the installer window, covers more advanced installation tasks, including installing Mastercam on a network and managing HASP codes and drivers. After installing Mastercam, you can find the guide in the Documentation folder of your Mastercam installation.*

# System Requirements

Following are the *minimum* system specifications for Mastercam operation. Your use of Mastercam may require a more powerful system, including a faster processor, more memory, and enhanced peripherals.

## Mastercam X System Requirements

<b>Processor</b>	<p>2.5 GHz minimum (recommended)</p> <p>32-bit or 64-bit Intel®-compatible processor</p> <p>Note: The processor must be SSE2-compatible. Intel-compatible processors manufactured since 2003 should be SSE2-compatible.</p>
<b>Operating System</b>	<ul style="list-style-type: none"> <li>▪ Windows XP, Windows Vista® (Business or Ultimate), or Windows 7 (Professional or Ultimate) including the latest service packs and recommended updates</li> <li>▪ VCRedist 2008 (Visual C++ Redistributable Package); installed with Mastercam</li> </ul>
<b>Memory</b>	<p>2 GB minimum</p> <p>Additional RAM recommended for optimal performance</p>
<b>Graphics Configuration</b>	<p>256MB OpenGL-compatible graphics card (minimum)</p> <ul style="list-style-type: none"> <li>▪ 1280 minimum width</li> <li>▪ 1280 x 1024 pixel resolution (minimum)</li> <li>▪ Full hardware acceleration display setting is recommended</li> <li>▪ Integrated graphics controllers are not supported</li> </ul>
<b>Hard Disk Drive Space</b>	<p>3 GB available hard disk space (minimum)</p>

## Mastercam X System Requirements

<b>Mouse</b>	<ul style="list-style-type: none"> <li>▪ 2-button (minimum).</li> <li>▪ 3-button or 2-button with middle mouse wheel (recommended).</li> </ul>
<b>Network Protocol</b>	<i>(NetHASP users only)</i> TCP/IP protocol for NetHASP installation
<b>Additional Supported Hardware</b>	<ul style="list-style-type: none"> <li>▪ Dual monitors.</li> <li>▪ Multi-core processors. (One or more processor per instance of Mastercam.)</li> <li>▪ SpaceBall® motion controllers.</li> </ul>
<b>Additional Software</b>	<ul style="list-style-type: none"> <li>▪ You will need the latest version of Adobe® Flash® to view the videos that accompany Mastercam.</li> <li>▪ You will need Adobe® Reader® 6.0 (minimum) to display the PDF documentation.</li> </ul> <p>You can download both applications from <a href="http://www.adobe.com">www.adobe.com</a>.</p>

## Installation Requirements

To install and run Mastercam, you must have the following:

- Mastercam installation program on DVD or downloaded from **[www.mastercam.com](http://www.mastercam.com)**. (CDs are available from your Mastercam Reseller.)
- Valid Mastercam X5 license (HASP SIM or NetHASP).

*Note: A single-user HASP is dark purple, whereas a NetHASP is red.*

- Update code information (current users only).

Notes:

- You can install Mastercam X5 only as a member of the Administrator group.
- To install Mastercam X5 properly, the user must have the **Impersonate a client after authentication** group policy. The Administrator group gets this permission by default, but some upgrade scenarios may not have this permission set.
- When installing as an Administrator for other users, you must select the **Anyone who uses this computer (all users)** option. This option is the default setting for the installation.

## Installing a HASP (Single-User License)

Mastercam supports both single-user and network licensing. The following procedure is for single-user licenses only. NetHASP installation is a network administrator task that is described in the *Mastercam X5 Administrator Guide*.

► **To install the single-user license:**

- 1 Locate an available USB port on the computer. If you are unsure of the port's location, consult your computer documentation.
- 2 Plug the male end of the HASP into the port.



---

**CAUTION:** The HASP attaches to your port in only one orientation. Do not force it into the port as you may damage the port and the HASP. If the HASP does not slide easily into the port, double-check its orientation.

---

## Previous Mastercam Versions

Previous Mastercam versions are unaffected by the installation of Mastercam X5. That is, after installing X5, previous versions should still operate correctly. However, the Mastercam X5 installer does not migrate settings from earlier versions. Please refer to the *Mastercam X5 Transition Guide* for information on migration.

# Installing Mastercam

When you insert the Mastercam DVD into your computer, the installation program runs and displays five options:

- **Mastercam X5 Installs:** Installs Mastercam using the default installation method. You can also repair, uninstall, or modify your Mastercam installation, as well as install additional products including Mastercam Art, Direct for SolidWorks, sample files, and more.
- **Utilities:** Provides installers for the NetHASP Server, the NetHASP Monitor, and Inventor View 2011. For information on NetHASP Server and NetHASP Monitor, please see the *Mastercam X5 Administrator Guide*.
- **Documentation:** Displays links to the *Read Me*, *Installation Guide*, and *Administrator Guide* documents.
- **Contact Us:** Lists contact information for CNC Software, Inc.
- **Exit:** Closes the installation program.

## ► To install Mastercam X5

This installation procedure installs the default Mastercam X5 installation with minimal user interaction, leaving your current version of Mastercam intact.

*Note: This procedure assumes that the `mastercam.ini` file (included on your installation media) is in its default state.*

- 1 Insert the Mastercam DVD into your computer's DVD drive. The Mastercam X5 Setup dialog box displays.
- 2 Click the **Mastercam X5 Installs** button. The Mastercam X5 Setup install type dialog box displays.
- 3 Select the products you want to install, and then click **Next**.

*Note: Mastercam Art is no longer automatically installed with Mastercam. If you want to install Art, you must select it from the product list in Step 3. Please contact your Mastercam Reseller for more information about the Art product.*

- 4 If you want to change any of the settings—including installation location—in the Current Settings box:
  - a Click the **Configure** button.
  - b Change the configuration settings as needed.
  - c Click **Done**.
- 5 Click **Next**. The license window displays.
- 6 If you agree with the license terms, select **Yes, I accept the terms of the license agreement**, and then click **Install**. The installation process begins.

When the installation completes, the Mastercam X5 Setup dialog box shows “Setup Complete.”

- 7 If you want to see the What’s New file, select **View What’s New**.
- 8 Click **Back to Main Page** to return to the main installation menu, or click **Exit** to end the installation.

## Starting Mastercam

Mastercam’s installer adds shortcuts to the **Start, All Programs** menu and to the Desktop. Use one of the following methods to start Mastercam:

- Double-click the **Mastercam X5** shortcut on the Desktop.



- Choose **Start, All Programs, Mastercam X5, Mastercam X5**.

The Mastercam initialization screen displays briefly, followed by the Mastercam software license agreement. After you view and accept the license agreement, the Mastercam X5 window opens.

*Note: If you do not have a Maintenance contract, you might have to update your SIM code before you can start Mastercam. Please refer to the Mastercam X5 Administrator Guide for more information.*

## Mastercam Support and Services

To learn about Mastercam, explore the books in your Mastercam installation’s **Documentation** folder. You can access these books easily from the Start menu by navigating to **All Programs, Mastercam X5, Documentation**. Mastercam also includes comprehensive help, which you can access by selecting **Help, Contents** from Mastercam’s menu bar or by clicking the Help button in most dialog boxes.

Use the following websites to find information on Mastercam:

<a href="http://www.emastercam.com">www.emastercam.com</a>	Mastercam global user forum
<a href="http://www.mastercam.com">www.mastercam.com</a>	CNC Software, Inc. corporate website
<a href="http://www.mastercamedu.com">www.mastercamedu.com</a>	CNC Software, Inc. Educational Division website

For assistance with installing Mastercam, its HASP or NetHASP, or to obtain more information on using Mastercam, contact your local Mastercam Reseller. If your Reseller is unavailable, you can call CNC Technical Support Services Monday through Friday, 8:00 a.m.–5:30 p.m., USA Eastern Standard Time.

When calling CNC Software for technical support, please follow these guidelines:

- Be sure you have already tried to contact your Mastercam Reseller.
- Provide the serial number of your HASP or NetHASP.
- Be ready to describe the problem in detail. Write down what happened, particularly if you cannot call immediately after the problem occurs.
- Be in front of your computer when you call.
- If possible, try to duplicate the problem before calling. Our Support Services technician may require you to duplicate the problem while you are on the phone.
- When you call, have ready a complete description of your hardware, including your operating system (OS), central processing unit (CPU), graphics card and settings, and memory.

You can also leave a message for CNC Support Services twenty-four hours a day, seven days a week via our email or website addresses. When sending email, please include:

- The serial number of your HASP or NetHASP
- Telephone number and contact information where you can be reached
- Files required to reproduce an issue, such as MCX and post files



---

**TIP:** Use Mastercam's Zip2Go utility to gather Mastercam part data into a compressed .Z2G file. This utility makes it easy to provide your Reseller or CNC Support Services with a file attachment that contains the information they need. Zip2Go scans the machine groups in your current part file and captures information such as your Mastercam configuration, machine definition, and post files. For more information on using Zip2Go, please refer to the Mastercam Help.

---

**Important Contact Information**

Address	CNC Software, Inc. 671 Old Post Road Tolland, Connecticut, 06084-9970 USA
Phone	(860) 875-5006
Fax	(860) 872-1565
FTP Address	ftp://ftp.mastercam.com
Internet Address	http://www.mastercam.com
email	support@mastercam.com



**Attention! Updates may be available.  
Go to [Mastercam.com/Support](http://Mastercam.com/Support) for the latest downloads.**



***cmc software, inc.***

671 Old Post Road  
Tolland, CT 06084 USA  
[www.mastercam.com](http://www.mastercam.com)

*Printed in the USA on 100% Post Consumer Waste, FSC Stocks*

**X5-InstallGuide**