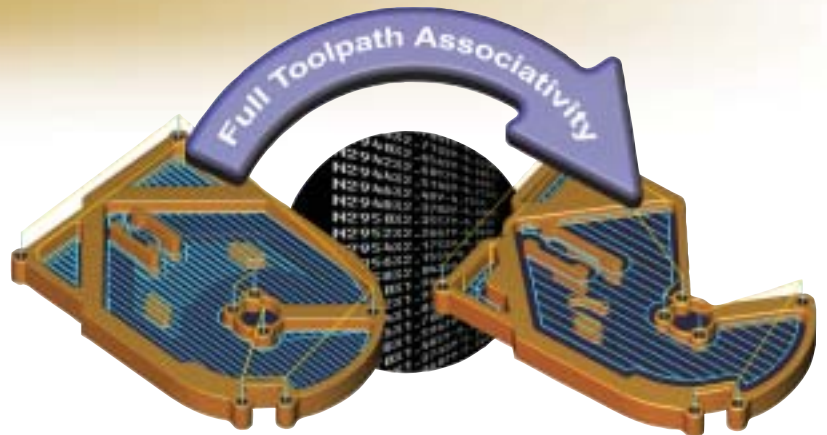


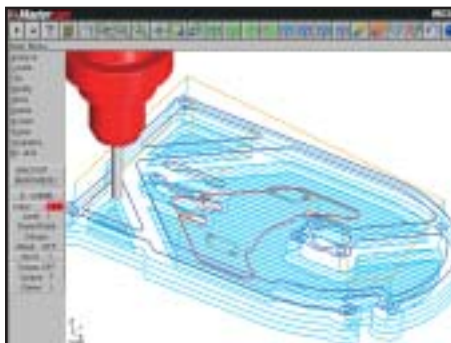
Mastercam[®]

Mill Entry



Capture Your Machining Knowledge

Mastercam's full associativity gives you the power to capture your knowledge and build on your experience. Once you program a part - any part - you can modify any element of the job and immediately get updated toolpaths without starting over. And Mastercam's intelligent NC programming lets you build a library of machining strategies done the way you want them. Just choose saved operations and apply them to a part, and Mastercam adapts them to the new model. Fast, easy and productive. The way programming should be.



Logical Part Modeling

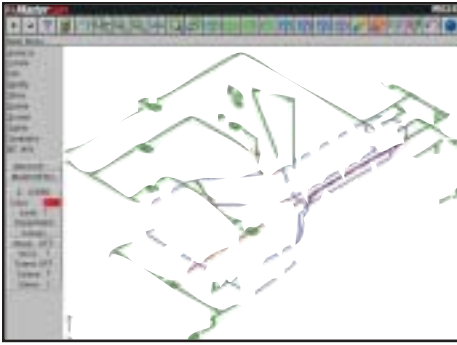
- Easy 2D and 3D geometry creation with complete wireframe modeling.
- Extensive editing and analysis tools ensure your model is exact.
- Associative dimensions update as you change your model.
- Dynamic rotation, panning, and zooming in multiple views.
- AutoCursor™ snaps to commonly used points to simplify construction.
- New user-defined Work Coordinate System makes it easy to reorient your View, Construction, and Tool planes, allowing you to work on a model without having to move it in 3D space.
- Built-in data translators for IGES, Parasolid®, SAT (ACIS solids), AutoCAD® (DXF™, DWG, and Inventor™ files), SolidWorks®, Solid Edge®, CADL, STL, VDA, and ASCII. Direct translators for STEP, Catia®, and Pro-E® are also available.

Associative Toolpaths

- Fully associative geometry and toolpaths let you modify the geometry or machining parameters and immediately get an accurate, updated toolpath.
- Store a library of commonly used operations to automate machining. For example, you can spot drill, peck drill, and tap a new series of holes simply by importing one stored operation.

Efficient Toolpath Management

- Mastercam's Operations Manager stores all your job's operations in one place. Quickly create, edit and verify your toolpaths, or copy and paste parameters, toolpaths and tool definitions from one operation to another.
- Copy, paste and cut your toolpaths.
- Translate, Rotate, and Mirror your toolpaths from the top view.
- User-customizable tool and material libraries automatically calculate feeds and speeds.
- Graphical toolpath editor gives you point-and-click on-screen editing tools.



Easily import, create, modify and dimension your parts.

Pocketing, Contouring and Drilling

- Automatic drilling countersink depth calculation.
- Optimize drill routines to minimize tool travel.
- Pocketing styles include zigzag and one way with optional finish passes.
- Choose helical or ramp entry for each pocketing level. Output helical moves as arcs or lines.
- Window select multiple drill points, contours, pockets, and nested pockets all at once.
- Area select pockets with a single mouse click.
- Facing cleans off the top of a part.
- Program separate lead-in and lead-out for contours and pocket finish passes.
- Choose multiple roughing and finishing passes and multiple depth cuts for any contour.

Practical Tools for Full Control

- Choose multiple machining areas with a single selection.
- Complete control over tool approach and retract.
- "Safe zones" help ensure safe tool retract in rotary work.
- Significantly reduce the size of a program with toolpath filtering.
- Custom tool geometry can be stored with the part file for easy retrieval.
- Automatically generate customizable setup sheets.
- Pick from a library of hundreds of post processors or have one customized.
- Optimize tool cuts using the included feeds and speeds calculator.

Dependable Toolpath Verification

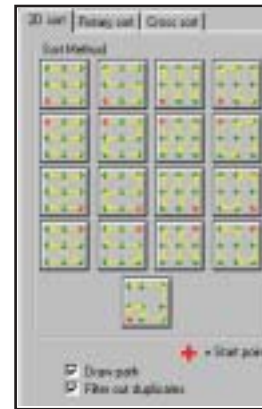
- Step through the program with toolpath backplotting and get an estimate of machining time.
- Dynamically view all the vital information about tools and operations at any point in the toolpath.
- Verify 2D toolpaths with a pixel paint of the full tool diameter.

Easy to Learn and Use

- Logical point-and-click interface lets you program the way you think.
- Fully customizable icon toolbar puts frequently used functions at your fingertips.
- Context-sensitive on-line help provides immediate access to Mastercam tips and instructions.
- Detailed tutorial gets you up to speed quickly.



Mastercam's Operations Manager gives you a fast, efficient way to manage your jobs.



Mastercam's graphical interface simplifies operations such as drill order selection.

System Requirements

- Pentium™ based PC
- CD-ROM drive.
- Graphics capability of 800 x 600 resolution and 256 colors.
- Windows compatible mouse
- Windows NT 4.0 or higher, Windows 98, 2000, ME or XP.
- Minimum 64 Mb RAM; Minimum 350 Mb free disk space in addition to Windows requirements.

Mastercam®

When Second Best Won't Cut It.

cnc software, inc. 671 Old Post Road, Tolland, CT 06084 USA
 (800) 228-2877 • Fax (860) 872-1565 • www.mastercam.com • mcinfo@mastercam.com