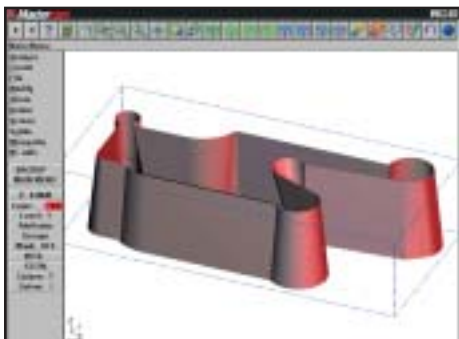


Mastercam[®] Wire



Capture Your Machining Knowledge

Mastercam's full associativity gives you the power to capture your knowledge and build on your experience. Once you program a part - any part - you can modify any element of the job and immediately get updated wirepaths without starting over. And Mastercam's intelligent NC programming lets you build a library of machining strategies done the way you want them. Just choose saved operations and apply them to a part, and Mastercam adapts them to the new model. Fast, easy and productive. The way programming should be.



Logical Part Modeling

- Easy 2D and 3D geometry creation with multiple ways to create entities.
- Extensive editing tools ensure your model is accurate.
- Associative dimensions update as you change your model.
- Dynamic rotation, panning, and zooming in multiple views.
- AutoCursor™ snaps to commonly used points to simplify construction.
- Built-in data translators for IGES, Parasolid®, SAT (ACIS solids), AutoCAD® (DXF™, DWG, and Inventor™ files), SolidWorks®, Solid Edge®, CADL, STL, VDA, and ASCII. Direct translators for STEP, Catia®, and Pro-E® are also available.
- User-definable drafting grid simplifies detailed construction.
- Analyze single points, between points, angles and entire entities.

Efficient Wirepath Management

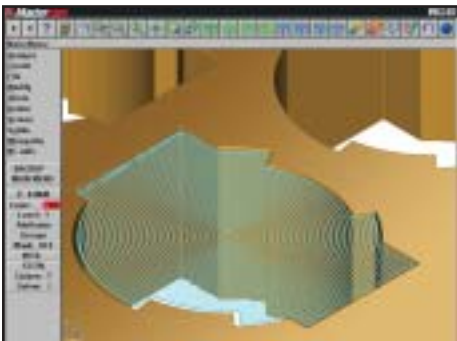
- Mastercam's Operations Manager stores all your job's operations in one place. Quickly create, edit and verify your wirepaths, or copy and paste parameters, wirepaths and wire power libraries from one operation to another.
- User-customizable wire power libraries store power settings and other registers for rough and skim passes.
- Graphical wirepath editor gives you point-and-click on-screen editing tools.

Associative Wirepaths

- Fully associative geometry and wirepaths let you modify geometry or machining parameters and immediately get an accurate, updated wirepath.
- Store a library of commonly used operations to automate machining.

Powerful EDM Programming

- 2-axis contour, with or without taper angle.
- No-core cutting.
- 4-axis synchronization with automatic or manual input.
- 4-axis synchronization with automatic skim and reverse cuts.
- 4-axis surface finish by chordal deviation.
- 4-axis interpolation support (G2/G3).
- Graphical programming with options for straight cut, tapered cut, or tapered cut with land from either direction.
- Automatic lead-in and lead-out strategies.
- Contour multiple parts using a single window selection.
- Automatic maximum taper/UV travel detection.
- Special Sharp Corner option creates an outside loop to assure corners are not rounded off.
- Automatic wirepath corner filleting.
- Translate wirepaths for easy part repetition without creating new geometry.
- Modify control settings, corner types and taper angles at any point in a contour.
- Define separate lead-ins and lead-outs for wirepaths with trimming of leads to improve efficiency.
- Apply tapers before or after a verticle wirepath.
- Click and dynamically drag a machining start point to anywhere on your model.
- Wirepath filtering significantly reduces the size of a program. The filter automatically turns small, multiple linear moves into single line or arc moves.



Run operations unattended with efficient no-core cutting.

Efficient Tab Creation

- Quickly add multiple tabs to any piece of geometry.
- Automatic tabs with user definable stop types.
- 'No Drop Out' tab option helps avoid slivers.
- Tab cutoff passes can be run after each part, or after all parts are done.
- Easily create tabs on open contours.

Dependable Wirepath Verification

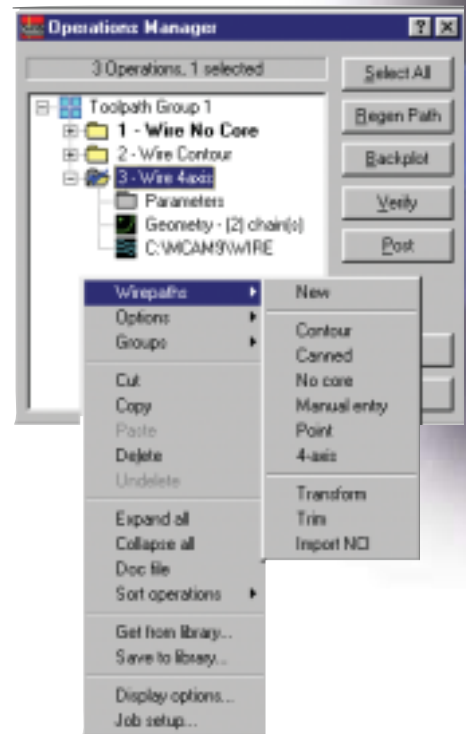
- Watch your part being cut from a block of material with Mastercam's solid wirepath verification.
- Step through the program with shaded wirepath backplotting.
- Dynamically view all the vital information about tools and operations at any point in the wirepath.
- Backplot XY and UV moves in different colors for easy identification.

Easy to Learn and Use

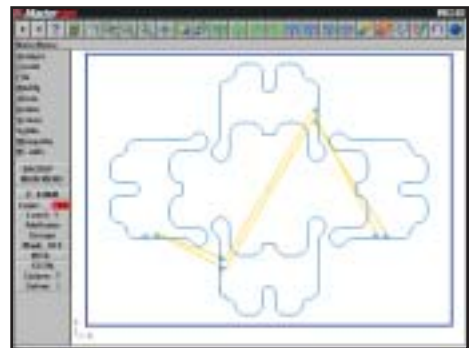
- Logical point-and-click interface lets you program the way you think.
- Fully customizable icon toolbar puts frequently used functions at your fingertips.
- On-line help provides immediate access to Mastercam tips and instructions.
- Detailed tutorial gets you up to speed quickly.

System Requirements

- Pentium™-based PC
- CD-ROM drive.
- Graphics capability of 800 x 600 resolution and 256 colors.
- Windows compatible mouse
- Windows NT 4.0 or higher, Windows 98, 2000, ME or XP.
- Minimum 64 Mb RAM; Minimum 350 Mb free disk space in addition to Windows requirements.



Mastercam's Operations Manager is a fast, efficient way to manage your jobs.



Mastercam simplifies 2- and 4-axis nested programming.

Mastercam®

When Second Best Won't Cut It.